

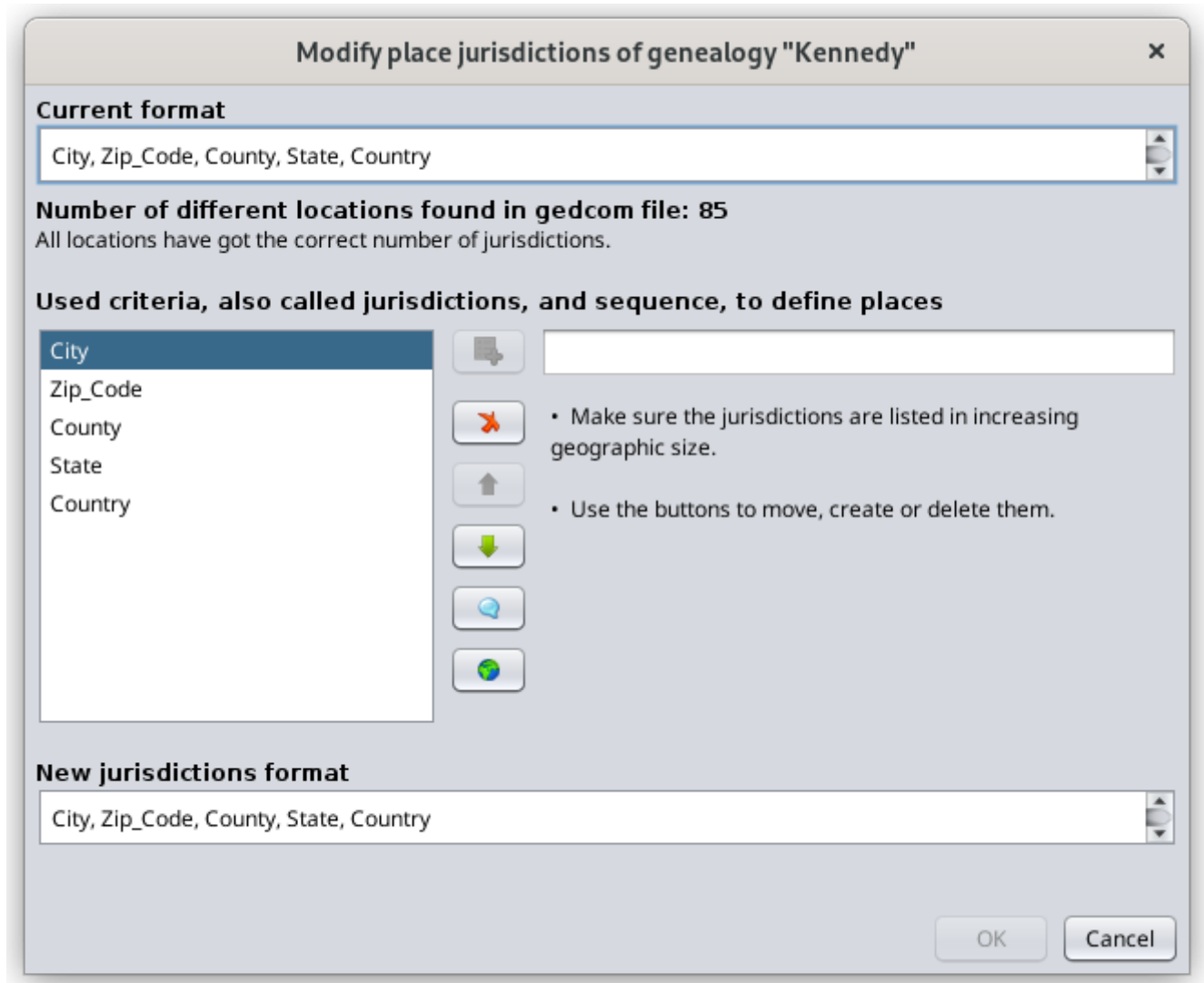
Modify place jurisdictions

This window lets you modify the standard place jurisdictions format of any Gedcom file and also align all place names existing throughout the Gedcom file to this definition.

This definition is saved in the header of the Gedcom file. It is therefore specific to each genealogy file and there is only one for each file.

If you decide to align all place names to the standard format, each place name will be modified accordingly and saved in the Gedcom file.

Description



This panel shows the existing format at the top under "**Current format**". Where does this current format come from?

- When you first create a genealogy file, Ancestris uses the main language to define the place jurisdictions format.
- When you migrate a Gedcom file from another software, Ancestris will also define the place format if none already exists, unless you do not convert the file when migrating it from this other software. In this case, Ancestris leaves the Gedcom file untouched, and just opens it. The **Current format** can potentially be empty if the previous software did not use this feature of the Gedcom standard.

Under "Current format" is an indication of how many different locations are found in the Gedcom file, and how many of them are not aligned to the place jurisdiction format. A button appears on the right hand side to let you decide to convert them.

The new format is at the bottom under "**New jurisdictions format**". If it is different from the current format, a button will appear to let you convert from the current to the new format, by defining the mapping table of the jurisdictions. See below.

The middle part of the panel is to create a new format using the buttons

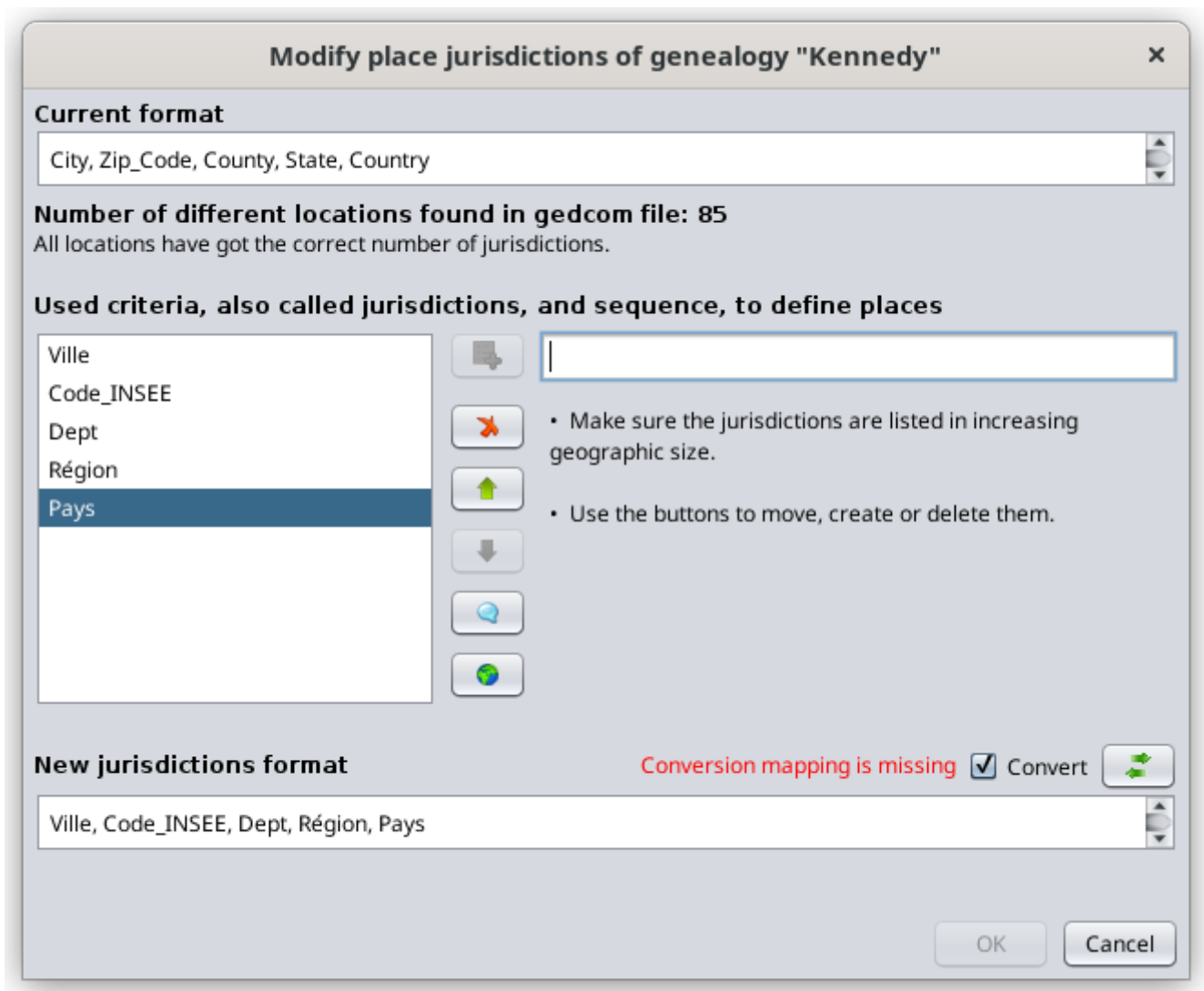
Here is how to proceed to define or change a place format.

First define the new jurisdictions format

- Use the **Add criteria button** [Propriétés_lieux_créer.png](#) to enter each of the jurisdictions one by one in the field to the right of this button.
- Use the **Remove criteria button** [Propriétés_lieux_supprimer.png](#) on each of the jurisdictions to be removed.
- Use the **arrow buttons** [Propriétés_lieux_déplacer.png](#) to order the new jurisdictions from the smallest to largest geographic area.

By the way, the **Empty button** [Propriétés_lieux_vide.png](#) allows you to insert an empty jurisdiction, and the **reset button** [Propriétés_lieux_réinitialiser.png](#) starts all over again.

The picture below shows an example when changing from the US to the French place format as an illustration.



Next provide the conversion map using the Convert button

Make sure the convert box ☒ Convert is checked and click on the Conversion button

Propriétés_lieux_convertir.png. This will display a mapping table between the current and new format fields as per the screen below.

The screen explains what to do. It is shown below after dragging and dropping the first 4 American jurisdictions which correspond to four of the French jurisdictions.

If a new jurisdiction does not exist in the current format, it will be empty in the new location.

If a current jurisdiction does not exist in the new format, the corresponding place information will disappear after conversion and data would therefore be lost.

Criteria for places conversion

Indicate here the correspondance between the jurisdictions on the left to be used in the target format on the right

To do so, just drag-n-drop jurisdictions on the left to the target fields on the right. You can drop on an occupied field, it will be replaced. The dragged jurisdiction will be grayed out to indicate it has already been used, but it will be still available for another drag-n-drop.

Jurisdictions to assign

City

Zip_Code

County

State

Country

Target Place Format

Ville

Code_INSEE

Dept

Région

Pays

City

Zip_Code

County

State

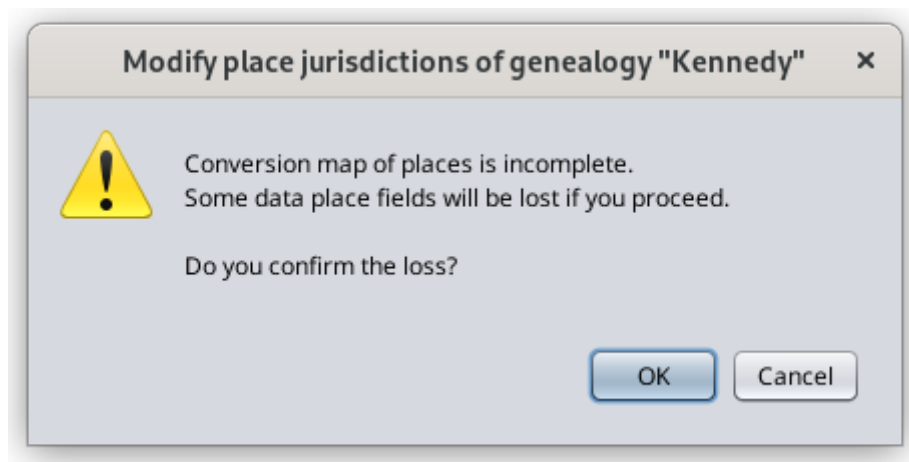
OK

Cancel

Once this correspondance is established, the OK button of the main panel becomes enabled. Click OK to make the place modification.

If you have changed the place format and filled in the conversion map, two situations can arise:

- either the number of criteria between the old and the new formats is different: in this case, Ancestris would notify you of an anomaly in all places when checking for anomalies. If you reduce the number of criteria, you will obviously lose the data corresponding to the criteria which have no position in the new format.



- or the number of criteria is the same: in this case, no data will be lost.

Result

By clicking OK on the previous screen, Ancestris will modify all places in the Gedcom file according to the conversion map and will display the following screen.

