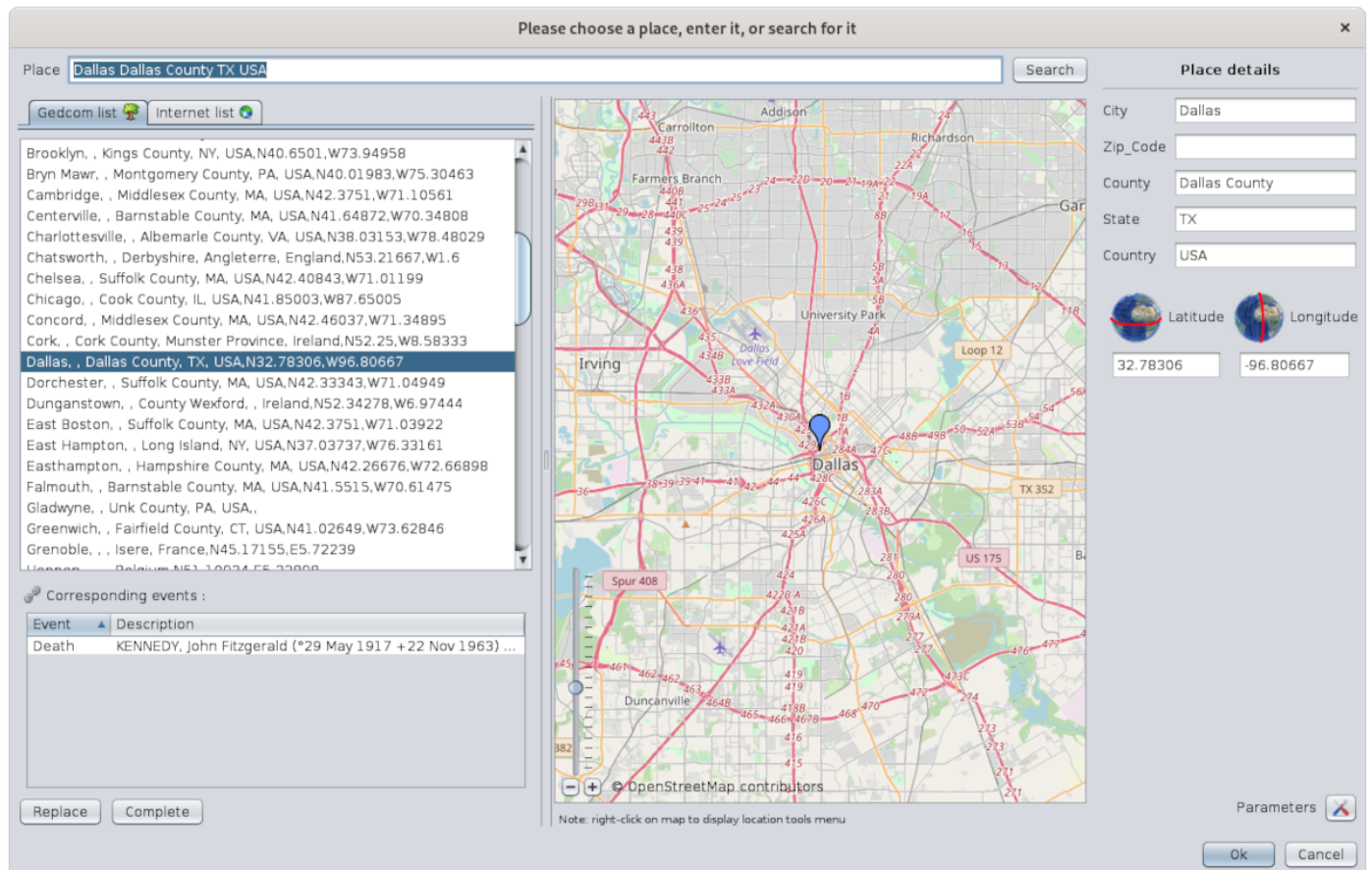


# Places editor

The **Places editor** is an editor dedicated to adding or modifying places, by standardizing their name thanks to a database of places available on the Internet.



The Place editor is only accessible from a place. It is not accessible from the menu bar.

## Description

The window includes:

- a **title** that is important
- the **name of the place** to be modified or searched
- **two lists of places** matching the search place
- the **list of all events** that use this place in the genealogy
- **buttons** to retrieve details of a found place
- a positioning **map**
- **details of the place**
- a **Parameters** button

- the **OK and Cancel buttons** to confirm your modification

## Window title

There are **two possible titles** for this window depending on whether you are editing the location of a single event or several at the same time.

- **One:** it is the modification of the place of a particular event for a particular entity in the genealogy.
- **Severall at a time:** it is the modification of the place for all the events that use it in the genealogy. All the events that use this place are therefore modified at the same time.

In the case of the modification of a single place, you launched the Place Editor from one of the editors, Cygnus, Aries or Gedcom, and the title bar should say this:

Please choose a place, enter it, or search for it



In the case of editing the place of several events at the same time, you launched the Place Editor from the List of Places view or from the Table of Places view, and the title bar should say "**Editing all places like**" and specify the name of the place.

For example, here is what the window title says if you edit the place Dallas from the List of Places view of the Kennedy genealogy:

Editing all places like: "Dallas, , Dallas County, TX, USA,N32.78306,W96.80667"



Before validating the modification of a place, look at this title to be sure of the context you are in.

## Place to modify or search

Place

The **Place field** displays the place currently being modified or lets you enter a place to search.

The Search button launches a search of the place on the Internet. It uses the Geonames database.

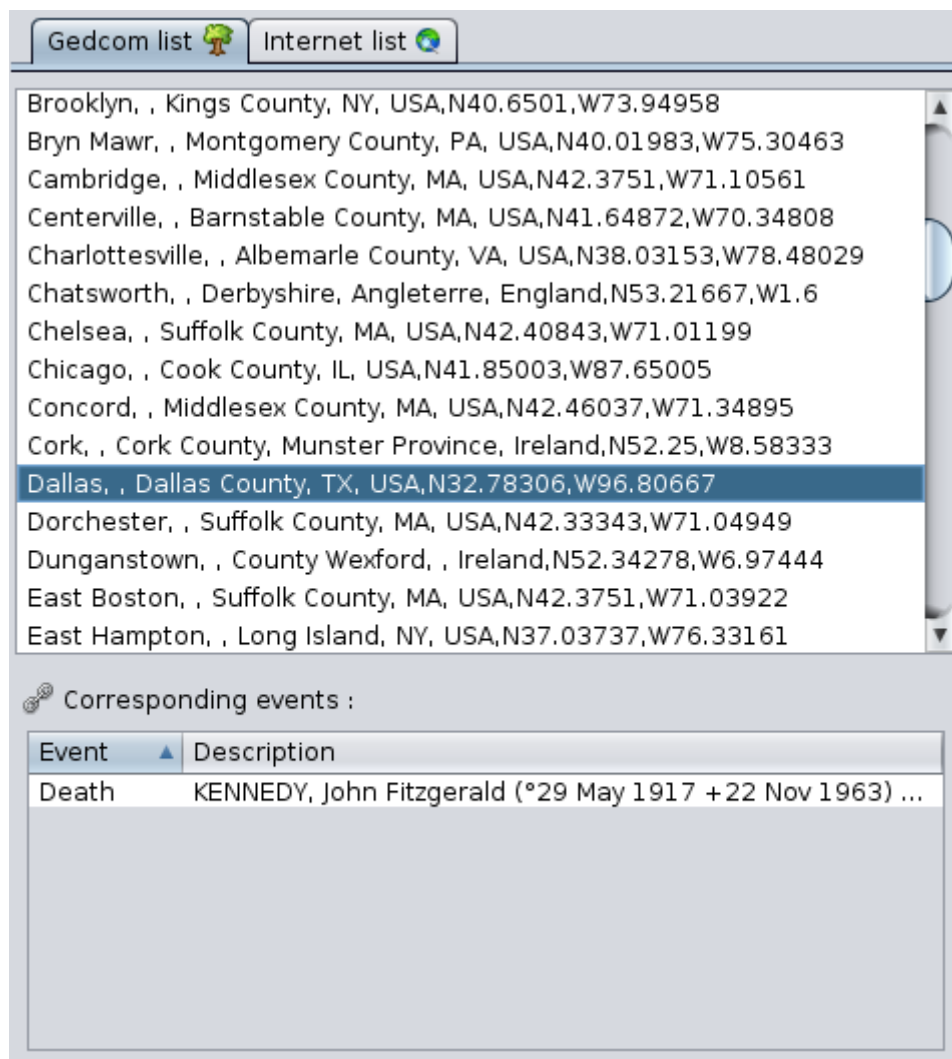
This button is greyed out while the search is in progress.

## Lists of places found

The places found correspond to all the places "similar" to the criteria entered in the Place field.

On the left side of the window are two lists of found places, depending on whether they were found in the current genealogy Gedcom or on the Internet.

## Gedcom list Tab



This tab has itself two lists that work together:

- At the top, the **list of places found** in the Gedcom file of the currently open genealogy
- At the bottom, **the list of genealogy events** corresponding to the location selected in the Gedcom list.

The event list has two columns:

- The Event column indicates the type of event (birth, baptism, marriage, occupation, etc.).
- The Description column shows the name and ID number of the individual involved in the event; if it is a family, the column shows the name and ID number of each member of the corresponding family.

Clicking on the column headers does an alphanumeric sort of the rows.

## Internet list Tab



This tab lists the main places found on the Internet - Geonames - for the last search performed. This list is empty when the window is opened.

## Buttons for retrieving details of a location

These buttons are used to retrieve all or part of the details of a selected place from the list of found places.



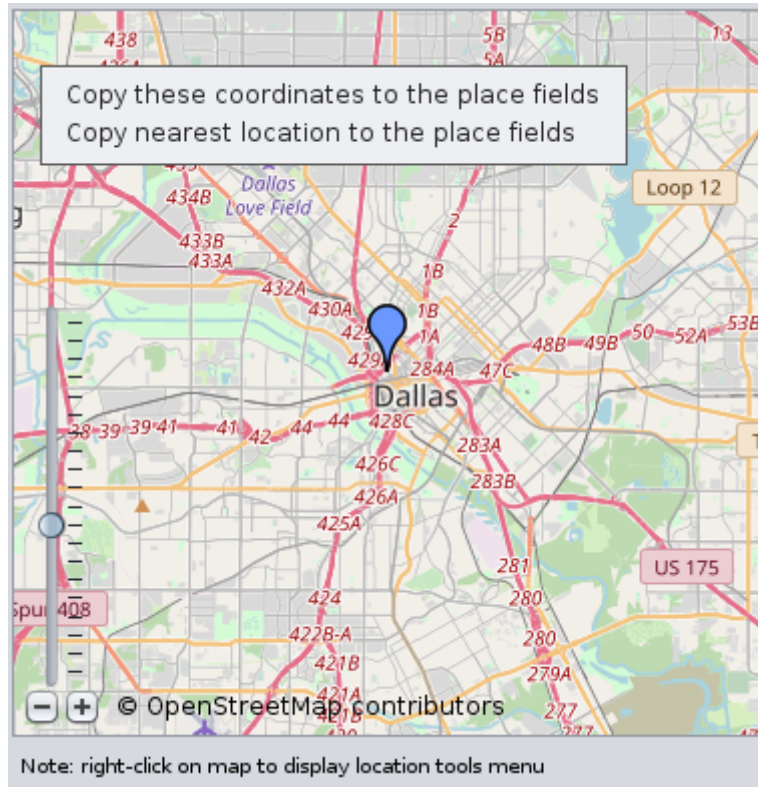
### Replace Button

It replaces all the details of the place to be modified by those of the newly found place.

### Complete Button

It only adds the missing details of the place to be completed with those of the newly found place.

## Positioning map



The central area of the place editor displays a map to position either the place being edited or the place selected in either of the two lists of places found.

A scale, at the bottom left, allows you to adjust the zoom.

This map offers a context menu that opens with a right click on any point of the map. This specific context menu lets you determine the coordinates of the point clicked. It contains the following actions:

- **Copy these coordinates to the place fields:** copies the geographical coordinates of the clicked point on the map to the Latitude and Longitude fields of the Place details.
- **Copy nearest location to the place fields:** copies the geographical coordinates of the nearest place of the clicked point on the map to the Latitude and Longitude fields of the Place Detail.

## Detail of the place

**Place details**

City	<input style="width: 90%;" type="text" value="Dallas"/>
Zip_Code	<input style="width: 90%;" type="text"/>
County	<input style="width: 90%;" type="text" value="Dallas County"/>
State	<input style="width: 90%;" type="text" value="TX"/>
Country	<input style="width: 90%;" type="text" value="USA"/>



Latitude



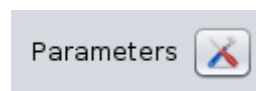
Longitude

The details of the place are in the right-hand panel. It includes the **place jurisdiction fields** - defined in the currently open genealogy- and the place Geographic coordinates fields.

The list of fields displayed may therefore differ from one Gedcom file to another.

The definition of the jurisdictions is done via **Menu/File/Properties**.

## Parameters Button



It opens the following window, which matches the names of the jurisdictions used by Geonames with the current open Gedcom file. Follow the instructions that are displayed in the window and press OK.

Settings of Internet locations with your place format

Ancestris needs you to indicate the correspondance between the Internet locations found and your gedcom format elements.

To do so, just drag-n-drop jurisdictions on the left to the target fields on the right. You can drop on an occupied field, it will be replaced. The dragged jurisdiction will be grayed out to indicate it has already been used, but it will be still available for another drag-n-drop.

Internet places format

City

PostalCode

GeoCode

County

State

Country

Your gedcom place format

City

Zip\_Code

County

State

Country

OK

Cancel

## OK button

Validates the modifications made to the place and closes the places editor.

If the Places editor was editing all the instances of the same place, all of them will be modified.

## Cancel button

Cancel the modifications and closes the places editor.

## Usage



The purpose of the Place Editor is to provide you with place names from around the world in a standardized format that matches the structure of your places in your genealogy.

You may need this editor in several situations:

- **Creating a place:** you have an event that took place in a place that you had not yet entered.
- **Using an already entered place:** you have an event that took place in a place you have already entered, and you want to enter it exactly as it was spelt, to avoid ending up with duplicate places.
- **Modification of a place already entered:** you have entered a place and you want to make a correction to it, but it is used in many places in your genealogy and you want to correct all of them in one go.

In all cases, the principle of use is the same:

1. Search the place in your Gedcom or on the Internet
2. Verify the place information: on the map and in the corresponding events in the [Gedcom list](#) tab
3. Update the place details
4. Validate

Please note that places can only be deleted from the Gedcom Editor.

## Search the place in your Gedcom or on the Internet

The search is based on the text entered for the place in the [Place field](#).

The search in your genealogy is immediate upon entering this text and the result is displayed in the in the [Gedcom list tab](#).

The search on the Internet is done in the free Geonames database of all places around the world once you click on the **Search button**.

During the Internet search, the button is greyed out. Once the search is finished, the button is accessible again and the result is displayed below in the [Internet list tab](#).

If no place matches your search, or if the results do not match at all, you can change the search field and launch another search.



# Verify the place information

The search results are in the two list tabs: internal to your Gedcom file, and external on the Internet.

## Positioning

The selection of one of the place item in either of these lists immediately positions the place on the map so you can see where the place is located.

Please note this only works for places with geographic coordinates, which might not be the case for all places of your Gedcom file. To fill them in, if this is not the case, you have to edit the place from the List of Places or the Table of Places, because the editing will be done for all events that use this place at the same time.

## Related events

If it is a place already present in your genealogy, the list of corresponding events is displayed, allowing you to evaluate the impact of your modification, depending on whether you are modifying a single event or several.

Double-clicking on an event line displays the entity in the other views of Ancestris. This allows you to have all the details about this event.

# Update place details

## Replace or Complete place details from the place found

Once you have found the right place, you can retrieve all the details of the place in your genealogy with the **Replace** button, or only the parts you are missing with the **Complete** button.

If the place is retrieved from the Internet and this is the first time you are retrieving one for your genealogy, Ancestris will need to know the correspondence with your place structure.

Indeed, places on the Internet generally have a different structure than yours, and Ancestris wants to be able to copy the right jurisdictions into the right fields.

At this point, Ancestris offers you the Parameters window. All you have to do is drag and drop jurisdictions from the left into the right boxes and save. Ancestris will remember this for future times.

For example, here is a correspondence after having assigned 5 of the Internet fields and having left out the field PostalCode.

Settings of Internet locations with your place format

**Ancestris needs you to indicate the correspondance between the Internet locations found and your gedcom format elements.**

To do so, just drag-n-drop jurisdictions on the left to the target fields on the right. You can drop on an occupied field, it will be replaced. The dragged jurisdiction will be grayed out to indicate it has already been used, but it will be still available for another drag-n-drop.

Internet places format

City

PostalCode

GeoCode

County

State

Country

Your gedcom place format

City

Zip\_Code

County

State

Country

City

GeoCode

County

State

Country

OK

Cancel

As soon as you click OK, the items you wanted are copied into the Place detail.

## Retrieving geographic coordinates from the map

It is possible to enter geographic coordinates using the map instead of entering them by hand.

To do this, right click on the map at the exact point or approximate (surrounding area) places you want to use. The [context menu](#) with both actions appears.

The geographical coordinates are then copied in the detail of the place.

## Changing details

To do the final touch to your place details, it is also possible to modify the elements that interest you directly by hand.

These fields can be modified and an auto-fill mechanism makes it easy to enter already known jurisdictions.

It works like this: if a low-level jurisdiction is changed, the higher-level jurisdictions are immediately changed as soon as you type, based on known genealogical locations. If there is no match, the higher-level jurisdictions are reset to their pre-entry value.

## Validate

If you are sure of your change and you checked the window title to see if you were editing a single event or several, press OK. The window closes and you are back to where you were when the window opened.

If in doubt, it's best to cancel your manipulation and start again.

If you make a mistake, you can always undo it with the [Undo](#) button on the Ancestris toolbar.

The <Escape> key closes the window without validating.

## Customization

Three elements can be customized in this window.

### Jurisdictions

The jurisdictions listed in the location details only reflect those defined in the properties of the Gedcom file.

Before any modification of the location, it is preferable to check that they are the ones you want.

Refer to the [corresponding section](#) to modify the properties of the file, accessible from the Menu bar, then File, then Properties.

### Window size

This window is rich in information and its size is memorized. You can therefore enlarge it to the maximum to get a good view of the lists and the map.

### Divider bar

It is possible to adjust the respective size of the map and the lists by moving the vertical separation bar between the two.

Its position is memorized from one time to the next.

---

Revision #1

Created 14 November 2021 14:35:06 by frederic

Updated 3 June 2023 14:56:42 by frederic