


Contact Ancestris Support Team

This feature helps you **contact the Ancestris support team by email**, describing your problem and automatically sending your system configuration items, as well as the Ancestris log file.

Contact the Ancestris support team



Contact the Ancestris support team

Send us comments and ideas to help us improve Ancestris, as well as anomalies and issues, and we will assist you. Thank you.

Your name

Peter Blake

Your e-mail

peter@mydomain.com

To

support@ancestris.org

Subject

Observation and suggestion

Message

Ancestris 11.0.10586 (en)
OS : Linux 5.8.16-200.fc32.x86_64 (amd64)
JRE: Oracle Corporation 1.8.0_251

=====

Message:

Dear support team,

I have issues with ...

Best regards,
Peter

Attach configuration files (537,541 bytes): ☒

Save configuration files...

Attachment:(optional)

/home/peter/ancestris/document.txt

...

Send

Cancel

Description

The window that opens looks like an email ready to be sent.

The recipient must remain support@ancestris.org.

The subject and the message must be completed.

A check box is available for you to attach the log file of the current Ancestris session.

You can attach a file using the file field.

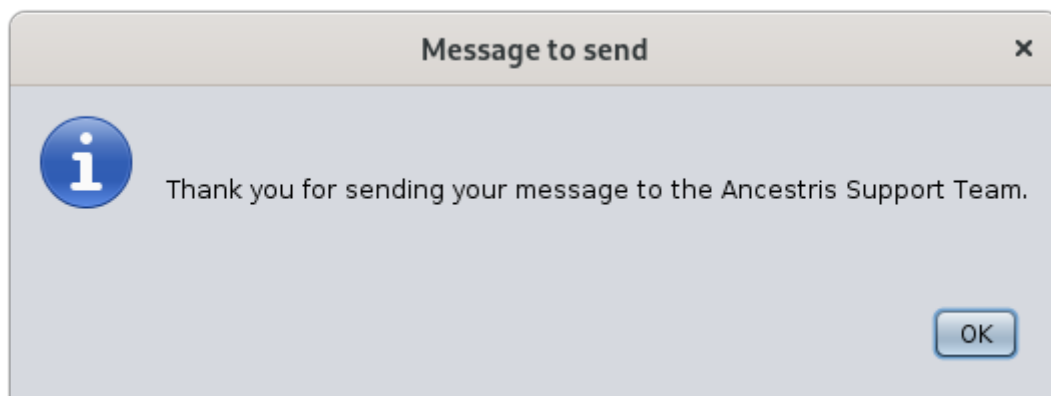
Usage

To contact support, simply complete the subject of your message and complete the message.

It is advisable to leave the box checked to attach the configuration files. We will use the ancestris.log file to understand the potential issue.

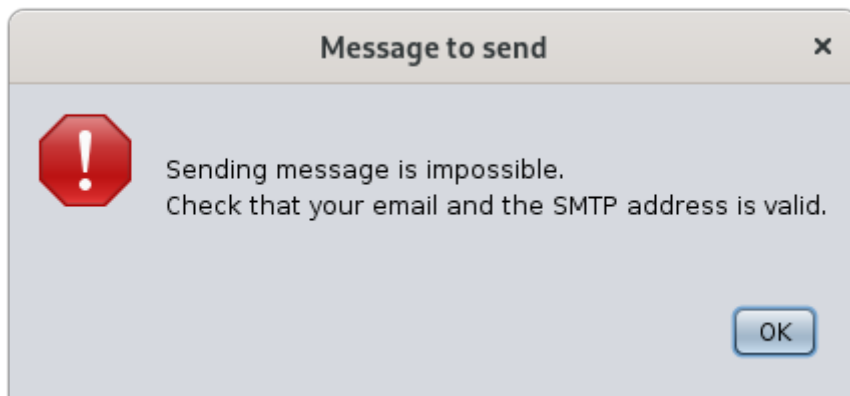
It is also advisable to put your name in clear so that we can answer you in a personalized way.

If the message could be sent correctly, you should see this message



It is not necessary to check your usual email client software because the email was sent by Ancestris.

If Ancestris fails to send the email, you will get a message like this for instance, where we have here an unsuccessful connection to the smtp server.

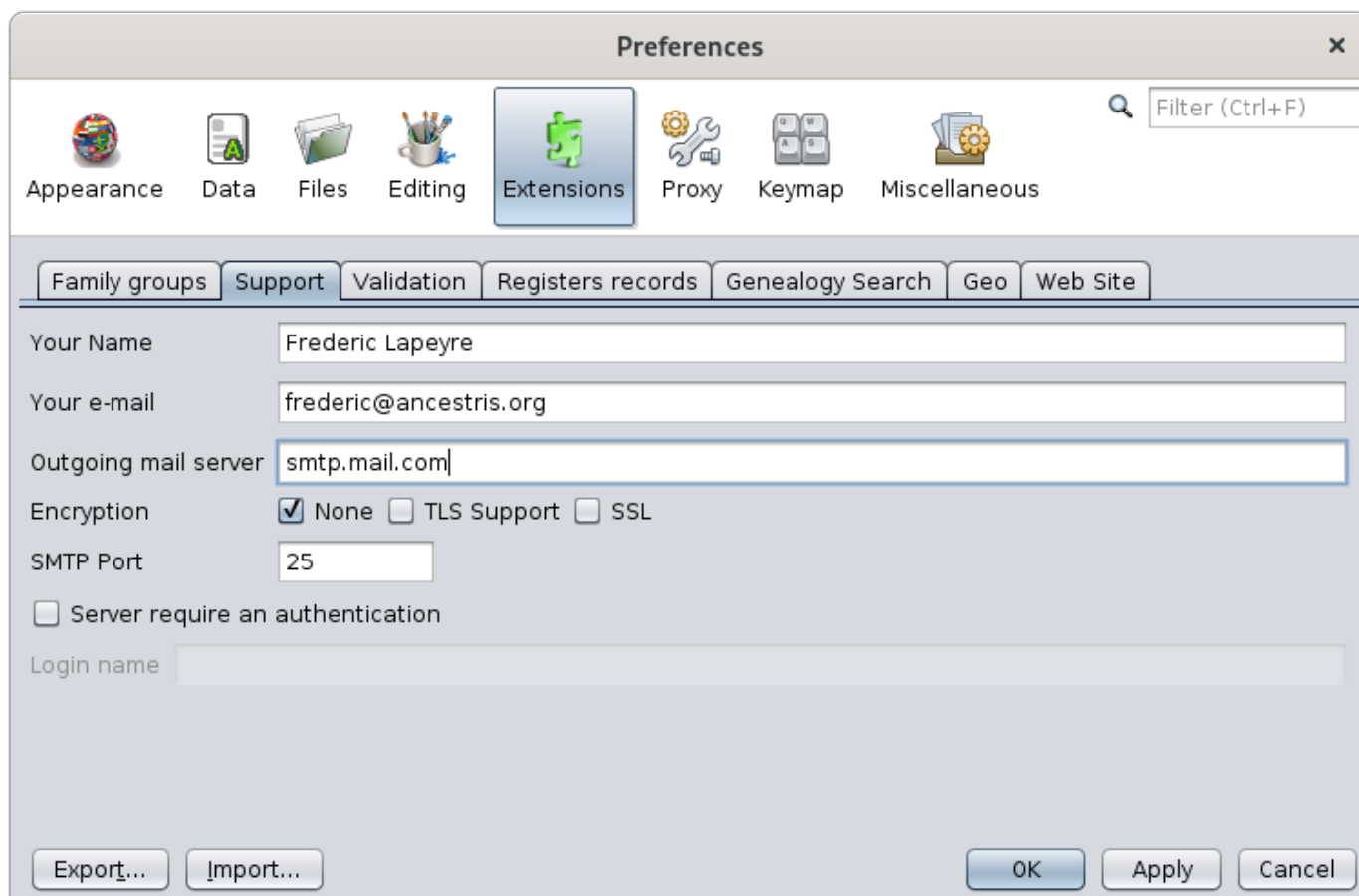


If the mail does not reach its destination, you should receive an mail in your inbox a few minutes later telling you something like: Undelivered Mail Returned to Sender.

Customization

Prior to sending emails to us, the outgoing mail configuration corresponding to your internet service provider must be defined in Ancestris preferences.

You are asked for these settings the first time you try to contact us, or by going to the **preferences, Extensions panel**, **Support** tab.



You define the outgoing email parameters in the fields provided.

The **SMTP server** of your Internet Service Provider is the one you put in your email client software to send messages, not to receive them.

Revision #1

Created 14 November 2021 14:38:27 by frederic

Updated 3 June 2023 14:56:43 by frederic